



February
2020

Medicaid & CHIP Beneficiaries at a Glance



Centers for Medicare & Medicaid Services
Medicaid & CHIP
Health Care Quality Measures

KEY FACTS

71,395,465

Medicaid and CHIP Enrollment,
October 2019¹

10,906,103

*People Dually Eligible for
Medicare and Medicaid, March 2019¹

15,181,880

**Medicaid Expansion Adult
Enrollment, September 2018¹

\$616 Billion

Total Medicaid and CHIP
Expenditures, 2018¹

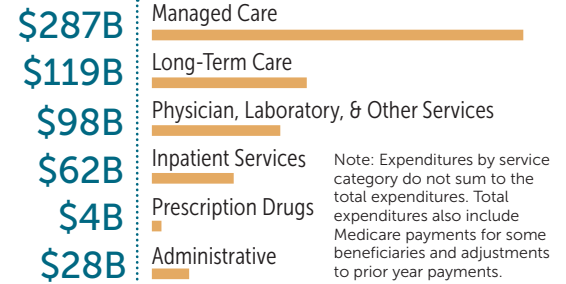
42%

U.S. Births Covered by
Medicaid, 2018²

69%

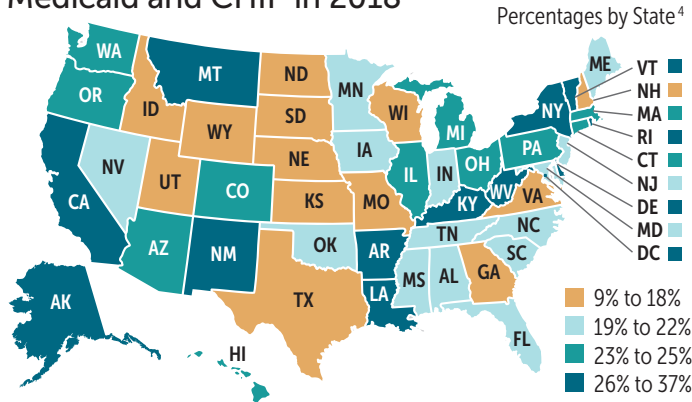
Medicaid Beneficiaries Enrolled in
Comprehensive Managed Care, 2017¹

Annual Medicaid and CHIP Expenditure by Service Category, 2017¹

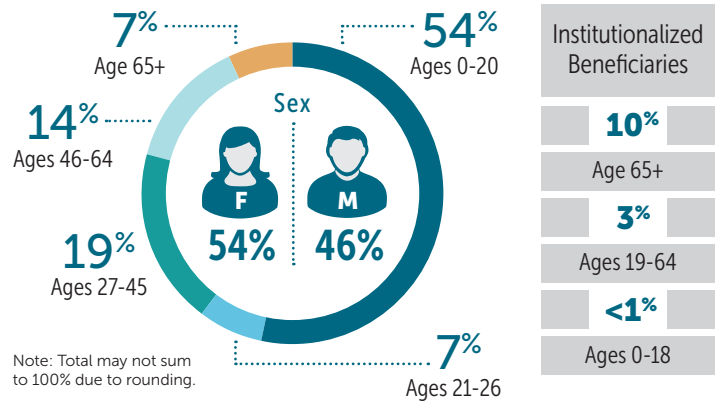


BENEFICIARY CHARACTERISTICS

18% of the U.S. Population Were Enrolled in Medicaid and CHIP in 2018³

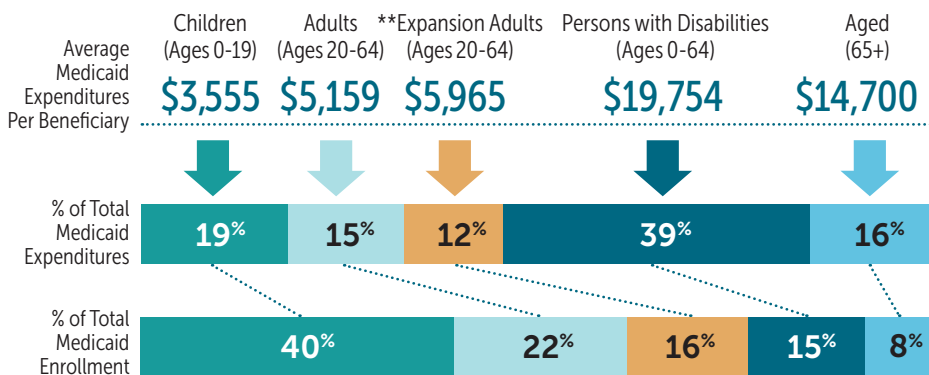


Beneficiaries by Age,¹ Sex,¹ and Institutionalized Status,⁵ 2017



BENEFICIARY CATEGORIES AND FUNCTIONAL STATUS

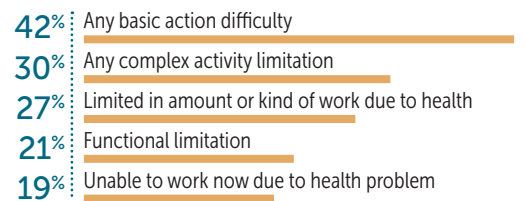
Medicaid Average Cost, Enrollment, and Expenditures, by Beneficiary Category, 2016¹



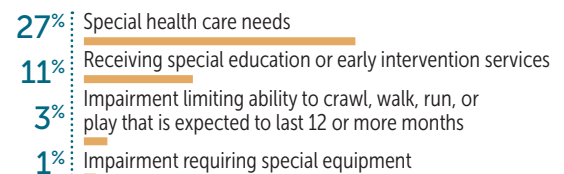
** Expansion adults = Adults made newly eligible for Medicaid under the Affordable Care Act beginning in 2014.

Beneficiaries' Self-Reported Functional Status, 2017⁶

Adults (Ages 19-64, non-institutionalized)



Children (Under age 19, non-institutionalized)



Note: These categories are not mutually exclusive or exhaustive.

If you would like more information about the Medicaid and CHIP programs and their beneficiaries, please see the following additional resources:

- The **Medicaid and CHIP Beneficiary Profile** provides an overview of the characteristics, health status, access, utilization, expenditures, and experience of the beneficiaries served by Medicaid and CHIP. It is available at: <https://www.medicaid.gov/medicaid/quality-of-care/index.html>
- CMS developed the **Medicaid and CHIP Scorecard** to increase public transparency and accountability about the programs' administration and outcomes. It is available at: <https://www.medicaid.gov/state-overviews/scorecard/index.html>

Getting Needed Care, 2019⁷

Percentage of Survey Respondents Who Selected 'Always'

Getting Needed Care Composite

Child Medicaid **61%**

Adult Medicaid **56%**

How often was easy to get needed care, tests, or treatment

Child Medicaid **67%**

Adult Medicaid **58%**

Got appointments with specialists as soon as needed

Child Medicaid **56%**

Adult Medicaid **54%**

Note: "Getting Needed Care Composite" combines responses of the two other questions in this section, which are shown below it.

Self-Reported Health Care Utilization Among Non-Institutionalized Children and Adults Covered by Medicaid or CHIP, 2017⁶

Had at least 1 visit to a doctor or other health professional

92% Children | **83%** Adults



Had at least 1 emergency department visit

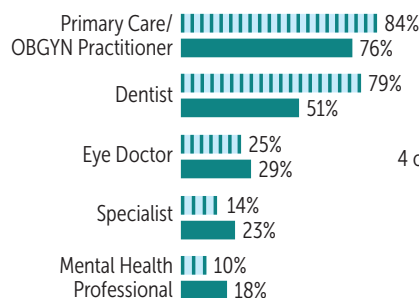
24% Children | **32%** Adults



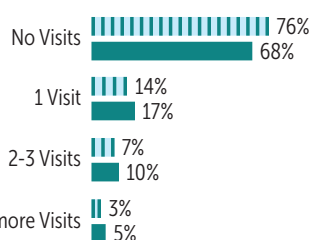
Had at least 1 overnight hospital stay

5% Children | **12%** Adults

Percentage of Beneficiaries with Visits to Selected Providers in the Past 12 Months



Number of Visits



Received care at home

1% Children | **3%** Adults

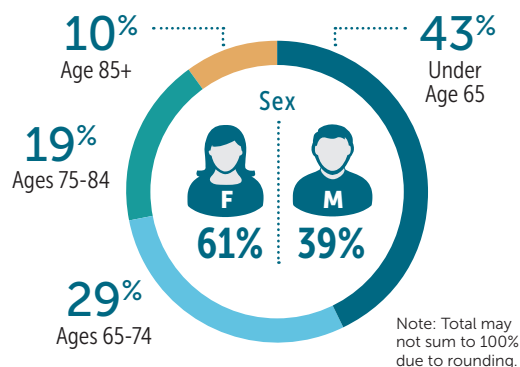
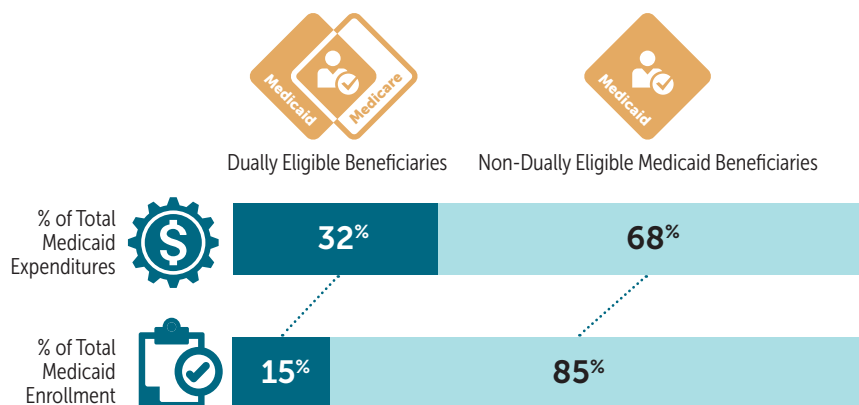
KEY: Children Adults

Note: Data include all non-institutionalized children under age 19, and non-institutionalized adults ages 19 to 64 covered by Medicaid, CHIP, or other state-sponsored health plans.

DUALY ELIGIBLE BENEFICIARIES



Fast fact: Dually eligible beneficiaries are people dually eligible for Medicare and Medicaid. About three-fourths (72 percent) of dually eligible beneficiaries receive full Medicaid benefits and the remainder (28 percent) receive partial Medicaid benefits.

Demographic Characteristics of Dually Eligible Beneficiaries, 2016⁸Expenditures and Enrollment by Dual Eligible Status, 2013⁹

DATA SOURCES

1. Based on Centers for Medicare & Medicaid Services (CMS) administrative data.
2. Based on National Center for Health Statistics data.
3. Based on U.S. Census data.
4. Based on CMS administrative data and U.S. Census data.
5. Based on American Community Survey data in the Integrated Public Use Microdata Series (IPUMS USA).
6. Based on Medicaid and CHIP Payment and Access Commission (MACPAC) analysis of National Health Interview Survey data.
7. Based on Agency for Healthcare Research and Quality analysis of Consumer Assessment of Healthcare Providers and Systems (CAHPS) Health Plan Survey data.
8. Based on Medicare Payment Advisory Commission (MEDPAC) analysis of Medicare Current Beneficiary Survey data.
9. Based on joint MEDPAC and MACPAC analysis of CMS administrative data.

Suggested Citation: Center for Medicaid and CHIP Services, Division of Quality and Health Outcomes. **Medicaid and CHIP Beneficiaries at a Glance.** Centers for Medicare & Medicaid Services. Baltimore, MD. February 2020.